



PEAK SERIES
FOR 30" x 30" I.D. STRUCTURE



238 McGhee Rd
Winchester, VA 22603
phone: (877) 877-5727
www.stormrax.com

PART INFORMATION

NAME: Peak Series
MATERIAL: Structural HDPE with fiberglass fill
WEIGHT:
36-13/16" x 38-1/4" : 58 lbs.

MOUNTING HARDWARE

ANCHORS:
3/8" X 3" Zinc wedge anchors with nuts and washers

AVAILABLE OPTIONS

ANTI-VORTEX PLATE

MATERIAL: 1/4" Polyethylene sheet
ADDED WEIGHT: 14 lbs.

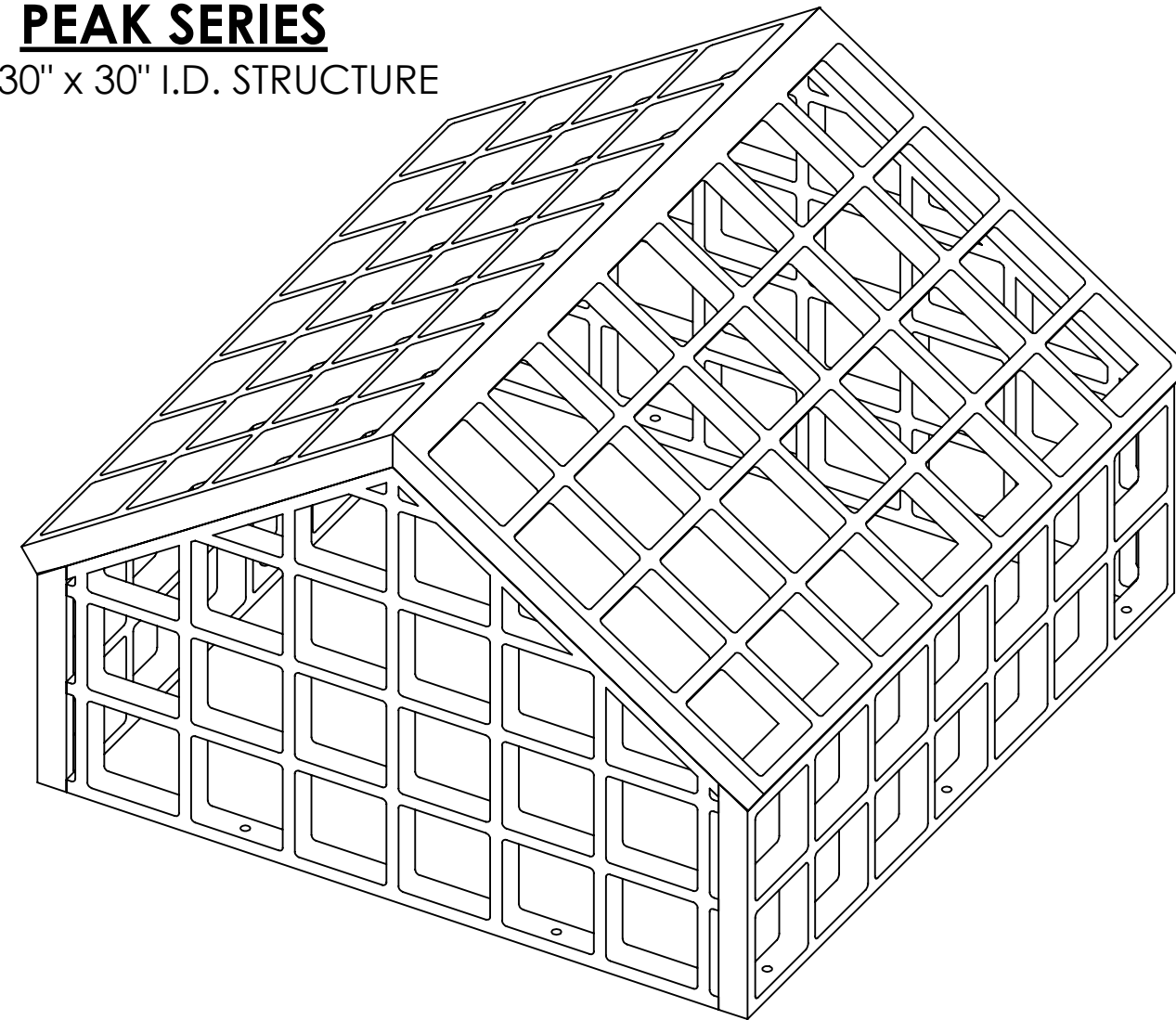
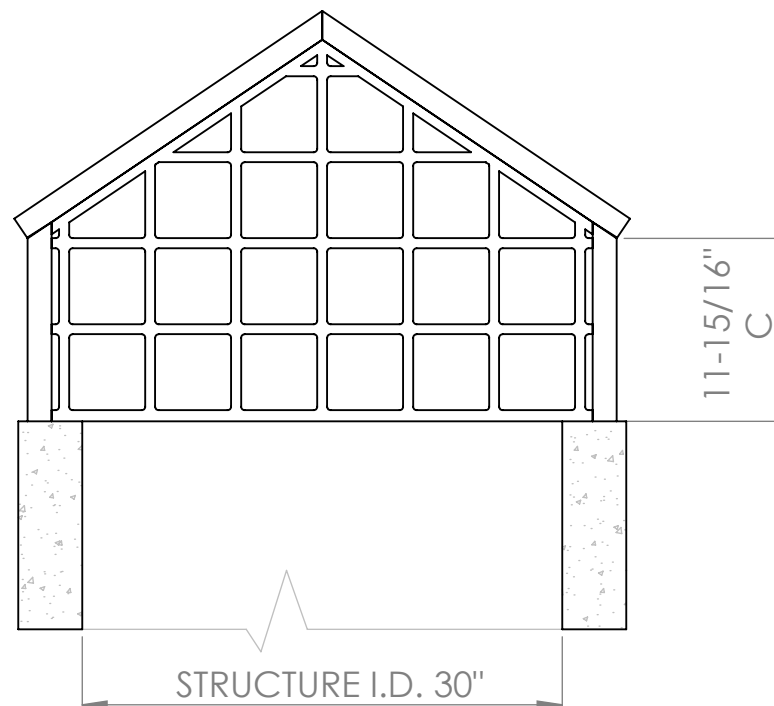
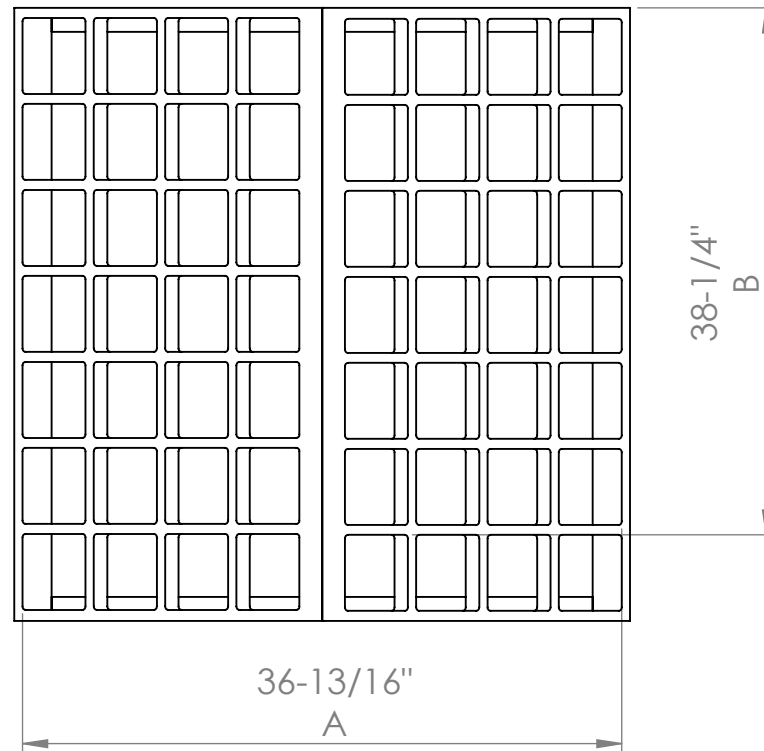
ADDITIONAL INFORMATION

Made in USA
See chart for addition lengths

Maximum opening size
4-3/4" x 4-3/4"

DATE: 12/26/2023 **REV. #4**
DRAWN BY: MJM

PROPRIETARY AND CONFIDENTIAL
THE INFORMATION CONTAINED IN THIS DRAWING IS THE SOLE PROPERTY OF PLASTIC SOLUTIONS, INC. ANY REPRODUCTION IN PART OR AS A WHOLE WITHOUT WRITTEN PERMISSION BY PLASTIC SOLUTIONS, INC. IS PROHIBITED.



SIZE TABLE O.D.	
Width A	36-13/16"
Length B	38-1/4"
Height C	11-15/16"

CONCRETE STRUCTURE DIMS. (IN.)			STORMRAX PEAK DIMS. (IN.)			Customer:	Date:
I.D. Width:	I.D. Length:	Wall width (req'd):	Width A:	Length B:	Height C:	Project:	By: